



New Release June 2019

## On the Meaning of Structure in Architecture

Mario Rinke (ed.)  
**The Bones of Architecture.**  
**Structure and Design Practices**

Book design: Robert Müller, Berlin

English, 240 pages, ca. 200 images  
17 × 24 cm, hardcover

Euro (D) 39.–, Euro (A) 40.–, SFr. 39.–  
ISBN 978-3-03863-044-9

### Exhibition:

Os Ossos da Arquitetura / The Bones of Architecture  
18 June until 15 September 2019  
Centro Cultural de Belém, Garagem Sul  
Praça do Império, 1449-003 Lisbon

- How can we design architectonic spaces based on the load-bearing structure?
- Positions of selected European architects and engineers

Beside the many components that characterise the appearance of a building, it is the physical prerequisites that are crucial. They tie the (structural) components together and let the building “stand”: just like the bones of vertebrates and us humans, every building has a load-bearing structure. From that perspective, construction, and thus also the buildings themselves are subject to fundamental sets of rules creating forms, patterns, orders and restrictions.

Today, construction and design technologies challenge the idea of structure and its role as a generator of architectural form. Moreover, the position of structure within the manifold factors of design and building is also under scrutiny in view of new possibilities to create form.

This publication investigates the cultivation of structures for architecture as developed by practising architects and engineers. Presenting the works and approaches of seven European architects and engineers, the editor simultaneously reflects on the rules, strategies and methods of designing (load bearing) structures.

With selected works by: Rui Furtado, engineer, Porto; Johansen Skovsted Arkitekter, Copenhagen; Pedrazzini Guidotti, engineers, Lugano; Bruther, architects, Paris; Brandlhuber+, Arno Brandlhuber, architect, Berlin; engineer Bernabeu, Madrid; 6a Architects, London, accompanied by interviews and texts by Ákos Moravánszky and Mario Rinke.



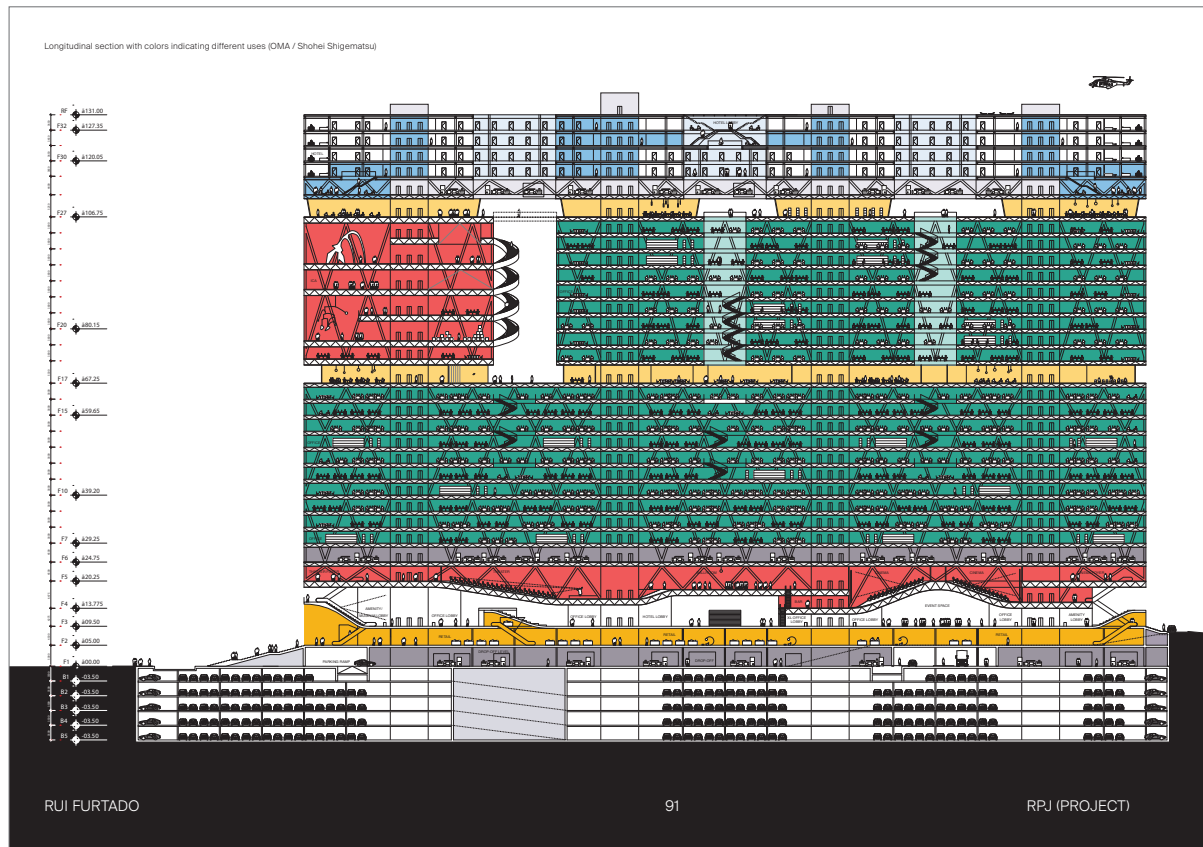
## Über den Herausgeber

**Mario Rinke** is a structural engineer and building historian specialising in early reinforced concrete and timber construction. He is researcher at the Department of Architecture, ETH Zurich where he has worked as a docent since 2011. He has also taught at HSLU Lucerne since 2009. Mario Rinke graduated in civil engineering from the Bauhaus Universität Weimar in 2006 and received his doctoral degree from ETH Zurich in 2013. After working as a civil engineer in London and Zurich, he now runs his own firm in Zurich.

Mario Rinke is founding member of the International Association of Structures and Architecture (IASA) and regularly publishes specialist articles and books on the subject of architecture and civil engineering.







Working model to study the structure and fabrication, 1/10 (Photo: Tiago Casanova)

